

local action plan



homewards

bourne
mouth,
christchurch and poole

Contents

Introduction	04
Executive summary	
<hr/>	
Section 1	20
Supporting young people under 25	
<hr/>	
Section 2	28
Making more affordable homes available	
<hr/>	
Section 3	36
Clearing the path to employment and training	
<hr/>	
Section 4	44
Placing people at the heart of everything we do	
<hr/>	
Contact Information	50

Executive summary



Homewards is...

A five-year, locally led programme, launched by Prince William and The Royal Foundation of The Prince and Princess of Wales in June 2023.

The aim of Homewards is...

To demonstrate that together, it is possible to end homelessness – making it rare, brief, and unrepeated.

Homewards was inspired by...

Successful projects from across the UK and around the world, all of which had one mission: to prevent and end homelessness.

They brought together all sectors of society and started with a focus on specific groups – to understand the help that is needed. And they showed clearly: it can be done.

The Royal Foundation has selected six flagship locations across the UK...

Working with them to form Coalitions of committed organisations and people from their public, private and voluntary sectors all committed to the shared mission of demonstrating it is possible to end homelessness:

- Aberdeen
- Bournemouth, Christchurch and Poole
- Lambeth
- Newport
- Northern Ireland
- Sheffield

Each local Coalition has created their own Local Action Plan...

Detailing the support that will be given to groups of people who are experiencing, or at risk of, homelessness in that area – for example women, young people and single-parent families.

Each Local Action Plan will also set out where new groundwork will need to be laid to prevent homelessness. Encompassing a wide range of solutions – from housing to data to employment – the aim of the Local Action Plans is to make the prevention of homelessness ‘business as usual’.

Through the Homewards Partnership, an unprecedented network of individuals and organisations, including top experts, and leading homelessness organisations, brought together by The Royal Foundation, have supported the Coalitions to develop the Local Action Plans. The Homewards Partnership will continue to support the organisations in the locations to deliver the Local Action Plans, galvanising national and international momentum.

Each Local Action Plan will be reviewed every six months...

To reflect on progress and capture new opportunities, activities in the Local Action Plans vary from testing new pilots that could be scaled, to fundamentally changing how people in their location work together to prevent homelessness.

These are ambitious plans and we may find some elements need to be adjusted or updated as time goes on. Work may get completed and new ambitions set, or conditions beyond the Coalitions' control might change which fundamentally impact delivery of some activity. These plans are therefore agile documents, growing with our Coalitions to ensure they remain focused on working to deliver tangible change and maximum impact towards the shared mission of demonstrating it is possible to end homelessness – making it rare, brief and unrepeatable.

‘By demonstrating what is working to prevent homelessness with these groups and across these key areas, Homewards will demonstrate it is possible to end homelessness, together.’

Homewards
National Expert Panel

The Royal Foundation will support each of our six flagship locations with...

Additional Capacity

Homewards has provided each flagship location with a Local Delivery Lead, alongside project management and administrative support, to help drive the work forward and help the location to reach its goals.

Seed Funding

We have set up the Homewards Fund, which provides up to £500,000 in seed funding to support the delivery of each Local Action Plan.

Expertise

Homewards has convened the Homewards Partnership, which includes national businesses, global experts, leading sector organisations and many more. Their support includes hosting webinars that our Coalitions can join, to hear about best practice and get support.

Changing the Narrative

Homewards will be leading on national campaigns, communications moments, and events to help drive conversation that will improve understanding of homelessness, encourage empathy towards those who experience it, and inspire optimism it can be ended. We will also set up local working groups to replicate this work in the locations, with the aim to deliver campaigns that will shine a light on the work being carried out – and which will engage the community through events and activities.

Evaluation and Learning

Homewards is working with a research partner to help to share what is working, and to evaluate success. We will encourage peer to peer learning across our locations as well as prepare annual programme evaluation reports to show the impact of our Local Action Plans and a small number of thematic learning papers each year on key topics, to show what is working and help inspire other areas of the UK and beyond.

Homes

Homewards is working with leading organisations in the sector, to help our flagship locations understand the types of homes they need – and to bring together the people and organisations that can deliver them.

Funding and Finance

Using the convening power and platform of The Royal Foundation, Homewards will help the flagship locations to secure new sources of funding and investment.

Employment

Regular work is an important way to prevent homelessness, Homewards will again deploy the convening power and platform of The Royal Foundation. Bringing together employers at both local and national level, we will unlock new or improved pathways to employment and training opportunities.

Data

Homewards will convene experts; to help the flagship locations improve the way they use the data that is stored, with partners across the locations. Bringing together different information will help the Coalitions to understand who is at risk of homelessness and when – and to understand what services are proving the most effective.

Early Intervention

Homewards is focused on prevention. To help the flagship locations pivot their approach to this, we will support them to test and deliver ideas that help people at the earliest point possible. Homewards will then look to show how other locations can deploy the approaches that are successful.

All the flagship locations have identified these as the areas where The Royal Foundation through Homewards can give the most valuable support, to help the Coalitions demonstrate that it is possible to end homelessness. The Royal Foundation is committed to this support and will continue to evaluate how we can best help our flagship locations throughout the programme.



How has The Royal Foundation supported our six locations so far

The Royal Foundation has helped to leverage a number of significant commitments from local and national partners to support our six locations. These include:

Creating more job opportunities for people with lived experience or at risk of homelessness

In September 2023, Pret A Manger committed - through Homewards - to expand their long-standing Rising Stars programme, which helps break the cycle of homelessness by providing support, training, and employment. Over the next five years it will support at least 500 people experiencing or at risk of homelessness into jobs at Pret's UK shops, including in Homewards locations where Pret has a presence.

Helping to prevent family homelessness with private landlords

In March 2024, local Sheffield landlords pledged to support Homewards with a commitment to providing an initial thirty-three homes to house families at risk of, or experiencing, homelessness in the city. They are working with Homewards to develop a package of support for both tenants and landlords to help to improve tenancy sustainment.

Recognising the tireless work of the homelessness workforce

Blue Light Card, the nation's leading discount provider for the emergency services, NHS, social care sector and armed forces, have extended its membership to include the homelessness workforce. The commitment supports an estimated 60,000 people in the UK homelessness workforce, which includes housing officers, night shelter managers, outreach workers and many more and gives them discounts to groceries, entertainment, and utilities. This partnership helps to raise awareness of the work that the workforce does and the essential role they play in supporting the social care sector.

‘Homewards has the right approach. They have brought a range of new players to the table, to focus minds on what it takes to prevent homelessness from happening in the first place.

It has been exciting, and unprecedented, to see these six coalitions come together to focus on delivering on that goal.’

Matt Downie, CEO, Crisis

Homewards in BCP: Executive Summary

Each of the Coalitions in the six Homewards flagship locations have created a Local Action Plan. This plan will be reviewed every six months and will adapt and change according to the needs of the locations.

For Homewards BCP, we have set out:

- 1. The initial groups of people that the local Coalition will support**
- 2. The actions to be taken by organisations in the local Coalition over the next 12 months and beyond**
- 3. How we will know what has been successful / Our success indicators**

This Local Action Plan is the beginning of a long road of work for BCP – but signals a new approach, with prevention and collaboration at its heart. The number of people experiencing homelessness in BCP may take years to decrease, while the Coalition's action takes effect.

These are ambitious plans and we may find some elements need to be adjusted or updated as time goes on. Work may get completed and new ambitions set, or conditions beyond the Coalitions' control might change which fundamentally impact

delivery of some activity. These plans are therefore agile documents, growing with our Coalitions to ensure they remain focused on working to deliver tangible change and maximum impact towards the shared mission of demonstrating it is possible to end homelessness – making it rare, brief and unrepeatable.

The local Coalition will measure success in several ways – as set out in more detail in the following pages – to ensure we know what is working.

‘A focus on prevention, backed by the new partners Homewards has brought to the table, will put these locations on a path to ending homelessness.’

**Professor Peter Mackie
Cardiff University**

Groups where Homewards can help the most

In BCP, the number of people experiencing, at risk of, or on the brink of homelessness is continuing to rise. Groups the Coalition has identified as most in need of support include single people, families, and young people (under the age of 25).

Despite the huge amount of wealth in the area, there is great inequality and local poverty levels are comparatively high. The rising cost of living has increased the financial pressure on households, and rents are rising.

There is also a rising shortage of affordable housing, reduced availability of private rented housing and limited employment opportunities – especially for those who are at the beginning of their careers, or who are looking to work in new industries where they may have less experience.

Actions to be taken over the next 12 months and beyond

There is a lot of work currently taking place in the area through the Homelessness Partnership BCP, which is currently reviewing its wider homelessness strategy. Homewards is focused on adding value around this existing activity. The Homewards BCP Coalition recognises that there is a real opportunity to improve collaboration, and to focus on preventing homelessness. This can potentially make a real difference and wider impact across BCP.

Homewards BCP plans to lay new groundwork – and make a lasting impact – in four specific ways:

1. Supporting young people (under the age of 25)
2. Making more affordable homes available
3. Clearing the path to employment and training
4. Placing people at the heart of everything we do

More detail on each of these areas is set out in the following pages.

How we will know what has been successful / our success indicators

The BCP Coalition has set the following indicators of success (to be assessed at yearly intervals):

- We will have brought together new and existing partners to create sustainable ways of working, which in turn have helped to (1) make more homes available; (2) create more jobs for those experiencing, or at risk of, homelessness; and (3) ensure that those at risk of, or on the brink of, homelessness got the preventative support they needed at the right time.
- We will have delivered successful projects, or tested innovative approaches, that prevented people from experiencing homelessness.
- We will have built local understanding around homelessness and encouraged empathy towards those locally who are experiencing homelessness, through local campaigns and putting lived experience at the heart of everything we do.
- By sharing what works, we will also have generated optimism that homelessness can be ended, which will be evident through greater community engagement and improved local public perceptions.
- We will have laid the groundwork needed to grow these successful projects across BCP, so that they can help more people (specifically other groups who are at a higher risk of, or on the brink of, homelessness).

Against each of the Action Plan sections below, the Homewards BCP Coalition has identified specific signs of success, which will tell us that our activities are leading to change.



1. Supporting young people under 25

Local context

More young people (under the age of 25) are experiencing homelessness than ever before in BCP, with a 24% increase in 2023/24 on the previous year. The reasons include family breakdown, the increasing cost of living, being unable to afford a home, and being unable to secure steady employment. BCP Council is also seeing many young people with care experience presenting as homeless – which highlights the need to help those young people who may not have a strong support network.

24%

BCP
increase in young people
experiencing homelessness

‘I believe that focusing on young people is vital because we are the future. I see this as an opportunity to put things in place now, which will help to prevent us becoming homeless later. Giving young people the best possible start will give us the opportunity to be successful for years to come. As a young person, I believe we should be looking to break the cycle of homelessness – and to create generations who are ready and able to live independently.’

Ivy Forest (23), Care-Experienced Young Person and Corporate Parenting Board Co-Chair 2023/34

BCP has already come together, via the BCP Homelessness Partnership, to put in place a Youth Homelessness Board to help local young people. However, it is recognised that there is more that can be done, and that not having the time, space, and resource to do everything has stalled further progress.

The coming together of the Homewards BCP Coalition, and additional support provided by Homewards, provides a real opportunity to help the many young people who are struggling within the community.

By improving understanding of how homelessness happens for young people, we can also start to meet the needs of young people who are at risk of, or on the brink of, homelessness – and prevent them from becoming homeless in the first place.

What are we going to do over the next 12 months?

1.1 Strategic review

Homewards BCP will undertake a new review of current and planned support that is available for young people, identifying what data about young people is being collected and how it is being used. Through this review, we will also talk to young people who have experienced homelessness, to better understand their journey and what could have helped. This review will need to include and reflect the diverse range of backgrounds, circumstances, and attributes of young people in the local area. The findings of this will inform the work of the Youth Homelessness Board and its priorities. The review will also identify which statutory organisations, voluntary and community organisations and private sector organisations are needed to be a part of the Board, for it to be successful.

Who is leading this work?

Every Youth [a national charity for 16- to 25-year-olds experiencing, or on the brink of, homelessness], funded via the Homewards Fund.

1.2 Data insight project

Homewards BCP will support the development of a new local 'Data insight project.' This project is exploring how we can use data to identify young people with children who are at risk of homelessness, so that we can target support to prevent it from happening. By testing this approach, we will develop a model that can be scaled with other groups in BCP and beyond to further prevent homelessness.

Who is leading this work? BCP Council

1.3 Increasing options for young people at risk of school exclusion

Homewards BCP will work with local public, private and third-sector stakeholders to further embed and deliver career education, information, advice, and guidance for young people who are at risk of exclusion, or who have been excluded. We will enhance workplace experiences and training for excluded young people being educated via alternative provision and young people who are EOTAS (Educated Other Than at School).

Who is leading this work? BCP Council, supported by Local Homewards Partner

1.4 Information, advice and guidance for parents and carers

Homewards BCP will develop and deliver a new early 'information, advice and guidance' pilot for parents and carers of students at The Bourne Academy – which is based in one of the areas with the highest rates of youth and family homelessness in

BCP. Homewards BCP will review whether this pilot has helped young people and families to prevent or reduce homelessness, before deciding whether to scale delivery into other schools.

Who is leading this work? Shelter

1.5 Digital training resources for school staff

Homewards BCP will develop and deliver new digital training resources for school staff across the local area to help them to recognise when young people might need help with housing, and to know where they can direct young people for support. The intention is for young people to get offered the right support at the right time, to prevent homelessness.

Who is leading this work? Shelter

1.6 New classroom resources for schools

Working with BCP Council's Education Services to identify appropriate schools, Homewards BCP will deliver a new pilot project that provides resources to school staff. It uses stories and lessons from the world's highest performers, famous faces, and role models to build young people's resilience, confidence, and wellbeing. The modules are specifically designed to teach pupils employability skills, and the overall aim is to ensure that pupils are better equipped to manage the transition out of school.

Who is leading this work? High Performance Foundation, an organisation that empowers young people worldwide to write their own stories, and provides essential tools and skills to help them thrive

What are we going to do over the next 4 years?

1.7 Early intervention in schools

Homewards BCP will support the roll out of Upstream, a preventative approach that starts with a survey that is carried out in schools, to identify young people who are at a greater risk of homelessness and get them the support they and their families need. The aim is to roll this out to at least three secondary schools across the location.

Who is leading this work? Centrepoint, a UK-wide charity that provides accommodation and support to homeless people aged 16-25.

Signs of success

These activities will contribute to the following signs of success

1.1 Strategic review

Homeworks BCP enables a coordinated response, focused on prevention, by expanding the Youth Homelessness Board in BCP to include statutory, voluntary, community-led, and private-sector organisations.

1.2 Data insight project

Young people with children at risk of homelessness are identified through the data insight project.

1.3 Increasing options for young people at risk of school exclusion

New support, education, training, and employment opportunities delivered for young people at risk of leaving school (or exclusion) before GCSEs.

1.4 Information, advice and guidance for parents and carers

1.5 Digital training resources for school staff

1.6 New classroom resources for schools

1.7 Early intervention in schools

Projects to prevent homelessness tested in schools in BCP. For successful projects, Homeworks identifies what is needed to roll them out further.

Key partners

- Action for Children
- BCP Council, Children & Families Directorate
- BCP Council, Education Services
- BCP Council, Housing Solutions Service
- BCP Council, Senior Enterprise Coordinator
- The Bourne Academy
- Bournemouth Churches Housing Association
- Caring for Communities and People
- Centrepoint
- Community Action Network
- Every Youth
- High Performance Foundation
- People who have experienced homelessness
- Shelter
- YMCA Bournemouth

2. Making more affordable homes available

21%

BCP
private renting

15%

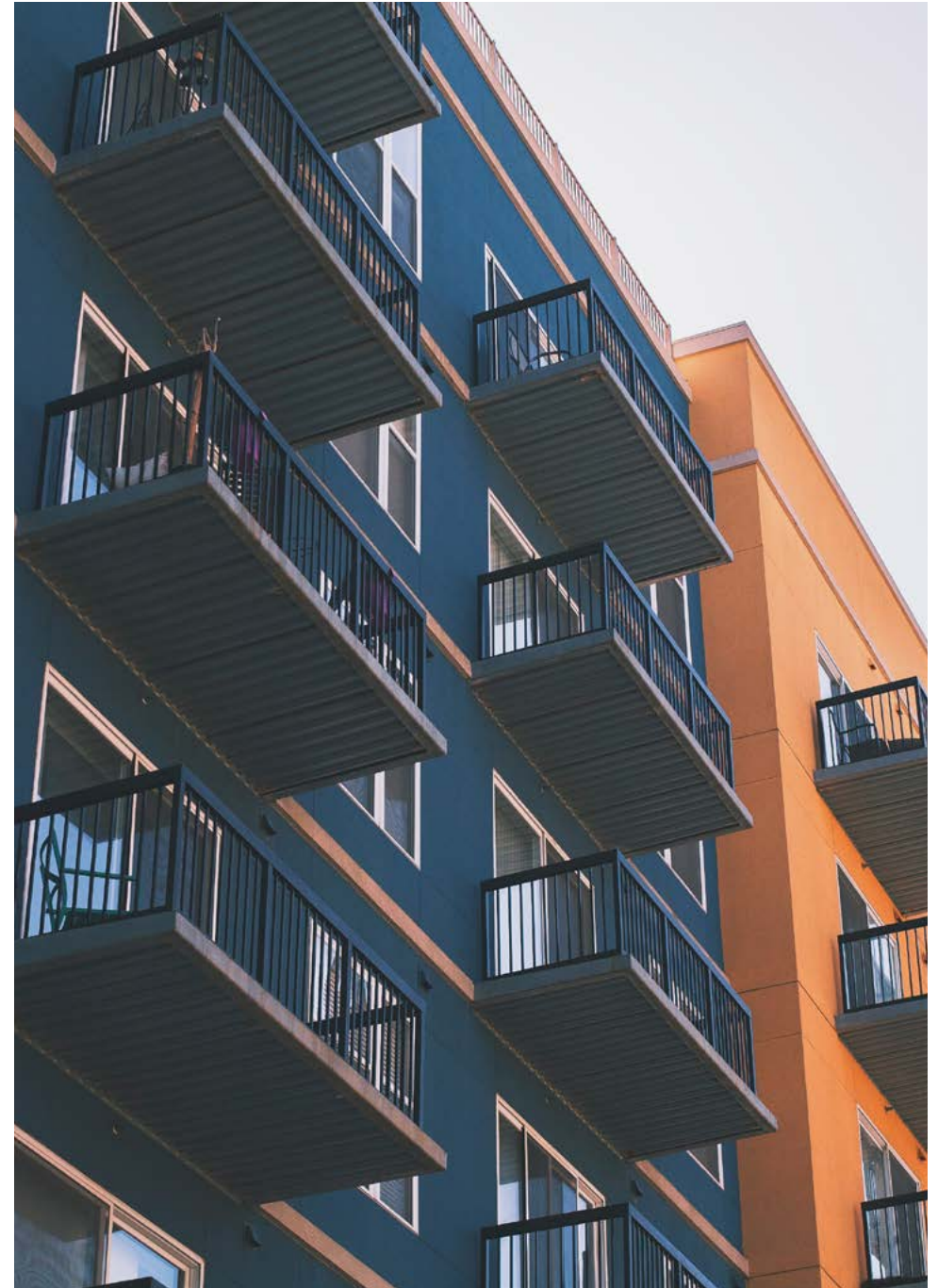
Southwest England
private renting

There are more people privately renting in BCP (21%) than any other place in Southwest England (average 15%), and this number is growing every day.

This is despite average private rents in BCP rising over 10% between August 2023 and August 2024. House prices are 14% higher in BCP than the national average.

High rents, and evictions from the private rented sector, are key reasons why people experience homelessness. The Homewards BCP Coalition recognises that more needs to be done to improve relationships between landlords and tenants, so that tenancies can be sustained longer, and so that people can afford to stay in their homes.

More homes that people can afford are also needed to help those who are currently experiencing homelessness (497 households were in temporary accommodation as of 31st March 2024) or on the brink of homelessness. The population of BCP is projected to increase by 21% between 2021 and 2038. Every year, 2,806 more homes are needed, with the Council estimating that at least half of them needing to be homes that people can afford.



‘A quality home is the first essential people need to live independent and fulfilling lives, yet we know there are thousands of people desperate for a good, affordable home as the foundation to grow their lives in BCP.’

Sovereign Network Group

What are we going to do over the next 12 months?

2.1 Innovative housing project

Each location is developing an innovative housing project, which will test new ways to make more homes available at scale, demonstrating what is possible when we come together to end homelessness. Aligned with the Local Action Plan, Homewards BCP's innovative housing project will house and support young people, including those who have care experience. We are working with young people with lived experience of homelessness, and partners with expertise in youth homelessness, to design and develop a housing project that will suit their needs.

Who is leading this work?
[The Royal Foundation](#)

2.2 Identifying sites for new homes

Homewards BCP will access the knowledge of real estate experts Knight Frank, who have created a bespoke and interactive database and web portal to support local strategies and help identify sites – including existing buildings and land for new development – that could be developed into homes that people can afford.

Who is leading this work? Homewards
[Activator Knight Frank & Creating8Places](#)

2.3 Funding for homes

Using the convening power of The Royal Foundation, Homewards BCP will bring together a range of local and national funders and investors who may be interested in funding the delivery of more homes in BCP.

Who is leading this work?
[The Royal Foundation](#)

2.4 Delivering new homes

Using the convening power of The Royal Foundation, Homewards BCP will bring together building and development experts with the aim of creating new partnerships that will deliver more homes in BCP.

Who is leading this work?
[The Royal Foundation](#)

Key partners

- Arts University Bournemouth
- BCP Council, Children's Services
- BCP Council, Housing Development
- Caring for Communities and People
- Creating8Places
- Freshfields
- Knight Frank
- Sovereign Network Group
- The Construction Liveries Group
- Worshipful Company of Chartered Architects

Signs of success

These activities will contribute to the following signs of success

2.1 Innovative housing project

More homes for young people, including those who have care experience.


2.2 Identifying sites for new homes

2.3 Funding for homes

2.4 Delivering new homes

New partnerships that unlock funding and land for more homes in BCP.



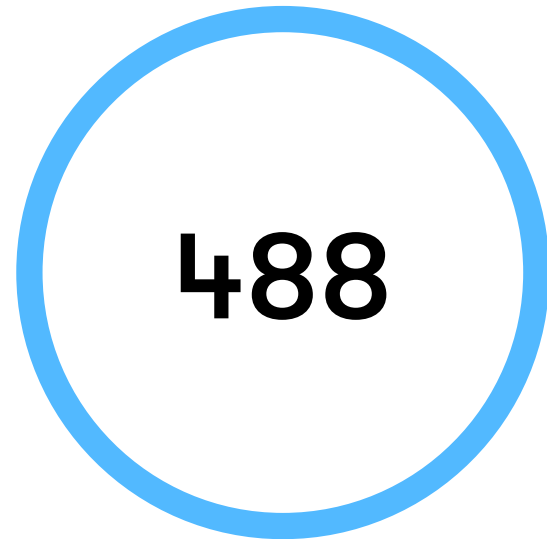
A decorative graphic consisting of a blue horizontal line at the top, a pink rounded rectangle on the left, and a blue stepped line on the right. The background is split into white and light pink sections.

3. Clearing the path to employment and training

Local context

Over 600 people experiencing homelessness in BCP are currently seeking work. In June 2024, those seeking employment included 30% of single adults (488 individuals) who were experiencing homelessness and 15% of family households (131 households) who were experiencing homelessness.

June 2024



single adults
experiencing homelessness
and seeking employment



family households
experiencing
homelessness and
seeking employment

In BCP, there is a solid foundation of collaborative working that focuses on helping local people to find employment and training. The BCP Skills Plan supports the local Economic Development Strategy, which encourages businesses to employ a great variety of people. The Meaningful Occupation Group, which is part of the BCP Homelessness Partnership, also focuses on helping local people to find employment, by bringing together charities and organisations to help people prepare for jobs.

However, Homewards BCP recognises that there needs to be greater help for people who are at a higher risk of experiencing homelessness in the area, and that Homewards can play a positive role in helping them to stay in education – or to find employment or further training.

Opportunities include creating better links between local support services, organisations, and employers, to understand what job opportunities are available to people who may have to juggle childcare, may have a criminal record, disabilities, gaps in their employment history or other challenges – but who might be a great fit in a particular role.

‘One of the key things that all businesses could do when they are recruiting for posts is not to set the bar too high and set unrealistic expectations. Let us not put barriers up for employment of people who are looking to move on.’

Ian Girling, CEO,
Dorset Chamber of Commerce

What are we doing over the next 12 months?

3.1 Creating more job opportunities

Homewards BCP will bring together over 80 local businesses and connect them with local organisations who specialise in supporting people who are experiencing, or on the brink of, homelessness. By bringing these new partners together, we will help local businesses to access new talent, to better understand some of the barriers to employment (for example disability or flexibility around childcare) and to ensure they have everything in place to help people to stay in their jobs.

Who is leading this work? The Royal Foundation’s Homewards Local Delivery Lead for BCP

3.2 Employment support directory

Homewards BCP will build on the work of the Meaningful Occupation Group, to create a directory of the ways people are supported to find employment, education, or training in BCP. We will then see if there are any opportunities to improve what support is available, and where there may be gaps in ensuring local people have everything, they need to explore further education, training, or employment.

Who is leading this work? Community Action Network

3.3 Sector-specific pathways

There are five sectors in the Dorset area that are recognised as needing more staff and expertise: Health and Social Care; Advanced Manufacturing and Engineering including Aerospace, Defence and Marine;

Construction; Digital Technology and Creative; and Agriculture, Agri-Tech, and Aquaculture. Through a working group of local business conveners, such as the Chamber of Commerce, Federation of Small Businesses, and the Business Improvement District, Homewards BCP will look for opportunities to make new links between the businesses in these sectors and organisations who are helping job seekers already.

Who is leading this work? Employers Working Group

Key partners

- BCP Council, Economic Development
- BCP Council, Education
- Bournemouth Town Centre Business Improvement District
- Bournemouth University
- Community Action Network
- COOK
- Department for Work and Pensions
- Dorset and Isle of Wight Federation of Small Businesses
- Dorset Chamber of Commerce
- Dorset Local Enterprise Partnership
- NatWest
- The Pret Foundation
- YMCA

Signs of success

These activities will contribute to the following signs of success

- 3.1 Creating more job opportunities
- 3.2 Employment support directory
- 3.3 Sector-specific pathways

A broader and larger network of businesses established in BCP employing and supporting people who are experiencing, or on the brink of, homelessness.

More job opportunities for people who are experiencing, or on the brink of, homelessness.



4. Placing people at the heart of everything we do

Local context

The Homewards BCP Coalition recognises that to be on the path to ending homelessness, there needs to be a holistic and proactive approach that encourages people to seek and receive help at the earliest opportunity. This can only be done by working hand-in-hand with the community – and specifically, with those experiencing (or on the brink of) homelessness.

Homewards BCP can play an important role by focusing on greater collaboration and joined-up ways of working.

This includes bringing together support organisations to share best practice and creating a public-facing directory of all support services.

It also includes building a framework that everyone can follow, when creating new projects and ideas with people with lived experience of homelessness, so that everyone gets a consistent and positive experience.

‘Homelessness is about the individual person, no matter how they got there or what they are facing. Everyone has their own story.’

Sam Spencer, person with lived experience of homelessness

What are we doing over the next 12 months?

4.1 Public-facing information, advice, and guidance directory

Community Action Network, a voluntary sector support organisation, has developed an online directory for professionals called Service Finder. This directory maps out support services in Dorset. To improve early access to information, advice, and guidance, Homewards BCP will support the development of the directory, so that it becomes public facing.

Who is leading this work? Community Action Network

4.2 Embedding the voice of those with lived experience of homelessness

Homewards BCP will develop a consistent way of working with people with lived experience of homelessness (and other support needs) across BCP, building on established frameworks and practices. This will help services to understand what they need to put in place to improve the way they offer support, making them more effective – and helping to prevent and reduce homelessness.

Who is leading this work? The Royal Foundation's Homewards Local Delivery Lead for BCP

4.3 Consistent working practices

Homewards BCP will create a new forum for homelessness essential workers to regularly meet and share their concerns, passion, and ideas on tackling homelessness, to improve cross-organisational relationships and provide ways for essential workers to

engage with senior leaders. This will help to share feedback directly with leaders, so that they can improve the way services operate and ensure local solutions to homelessness are more effective.

Who is leading this work? Homeless Link

Key partners

- Arts University Bournemouth
- BCP Council, Children and Families Services
- BCP Council, Housing Services
- Bournemouth Churches Housing Association
- Bournemouth University
- Community Action Network
- Dorset Council, Public Health
- Dorset Healthcare University NHS Foundation Trust
- Dorset VCSA
- Homeless Link
- National Institute for Health and Care Research
- NHS Dorset
- Sheffield Changing Futures Programme
- Shelter
- Sovereign Network Group
- St Mungo's

Signs of success

These activities will contribute to the following signs of success

4.2 Embedding the voice of those with lived experience of homelessness

Decisions about how to prevent homelessness in BCP are taken in partnership with people who have experienced homelessness.

4.1 Public-facing information, advice, and guidance directory in place

4.3 Consistent working practices
Homewards BCP enables a coordinated response focussed on prevention by developing (1) a public-facing directory of advice and support services, (2) an essential workers forum.

[Get in touch](#)

If you are a business or organisation that wants to find out more about working with Homewards, please contact homewards@royalfoundation.com and one of the team will be in touch.

For more information on homelessness across England, Wales, Scotland and Northern Ireland, please visit the following link: homewards.org.uk/help-resources/

[Source list](#)

Information in this Action Plan is based on data collected by Bournemouth, Christchurch and Poole Council about people who are experiencing or on the brink of homelessness, as well as the following sources:

Iceni, 'Dorset and BCP Local Housing Needs Assessment,' Nov 2021
<https://www.dorsetcouncil.gov.uk/documents/d/guest/iceni-projects-ltd-on-behalf-of-bcp-and-dorset-council-local-housing-needs-assessment-redacted>

Centrepoint, 'More than a number: The scale of youth homelessness in the UK,' May 2018
<https://centrepoint.org.uk/sites/default/files/2023-06/more-than-a-number-the-scale-of-youth-homelessness.pdf>

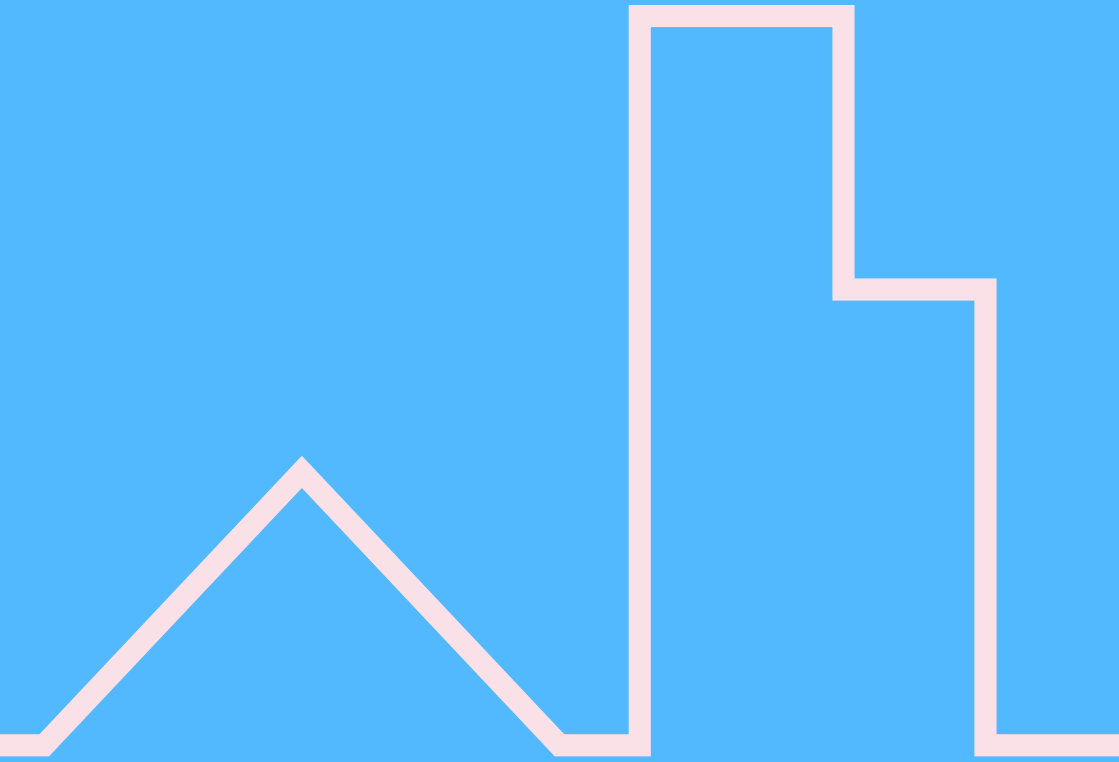
Action for Children, 'What are the effects of youth homelessness?' Feb 2023
<https://www.actionforchildren.org.uk/blog/what-are-the-effects-of-youth-homelessness/#:~:text=Mental%20and%20physical%20wellbeing,a%20young%20person's%20mental%20wellbeing>

Shelter, 'Factsheet Young people and homelessness,' (2005)
[upandhomelessnessintemplat2_1.doc \(ctfassets.net\)](http://upandhomelessnessintemplat2_1.doc(ctfassets.net))

Office for National Statistics, 'Housing prices in Bournemouth, Christchurch and Poole,' (October 2024)
[Housing prices in Bournemouth Christchurch and Poole \(ons.gov.uk\)](https://ons.gov.uk)

BCP Council, Dorset Council, 'Draft BCP Local Plan,' (March 2024)
<https://www.dorsetcouncil.gov.uk/documents/35024/282495/Statement+of+Common+Ground+-+BCP+and+Dorset+Council+March+2024.pdf/fe8b7af0-390d-6501-e878-72ec097dafdf>

Latest official statistics about homelessness in England are available here:
<https://www.gov.uk/government/statistics/statutory-homelessness-in-england-financial-year-2023-24>



**ROYAL
FOUNDATION**

OF THE PRINCE AND PRINCESS
OF WALES